

CLRMAMEPRO How-To/Guide

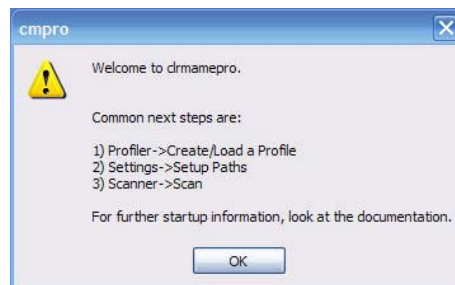
DISCLAIMER:

This is how I use clrmamepro. It may not be the correct way but it is a way that I have found to work for me. If your system is rendered unusable through following this how-to/guide, don't contact me as I will not offer any support other than what is detailed in this how-to/guide.

Installing.

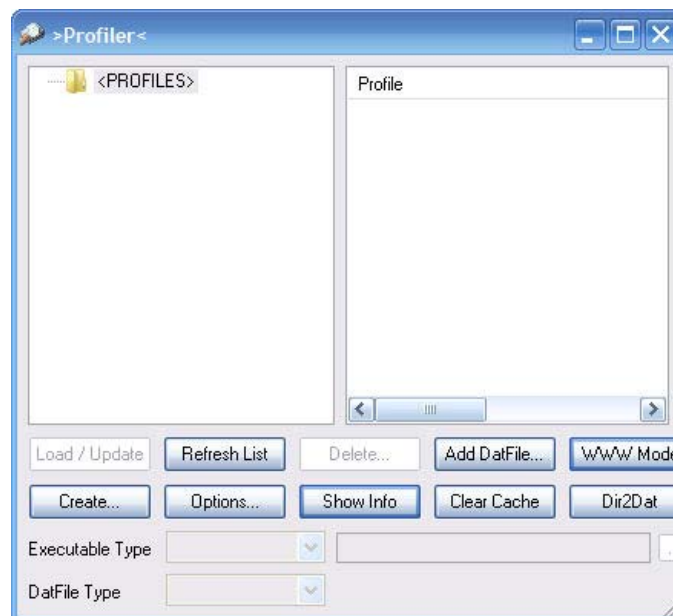
Download from www.clrmame.com. I choose the .exe as it is a wizard based executable.

Double click the installer.exe and you will be greeted with this screen:



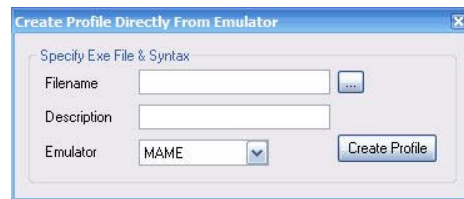
I choose "ok" and continue.

Next screen is:



Click the create button.

You will be presented with this screen:

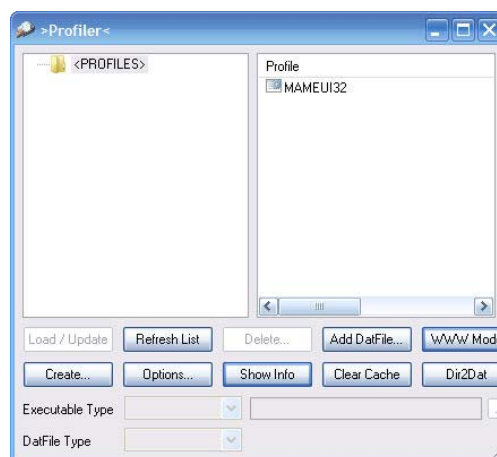


Here is where we select what emulator we want to use. In this how-to, it is MAME we are using. We then choose/browse for the 'Filename' and browse our directories for the MAME .exe. Once found enter a description, (I choose MAMEUI32). Press the 'Create Profile' button.

This window will appear, click 'OK'.



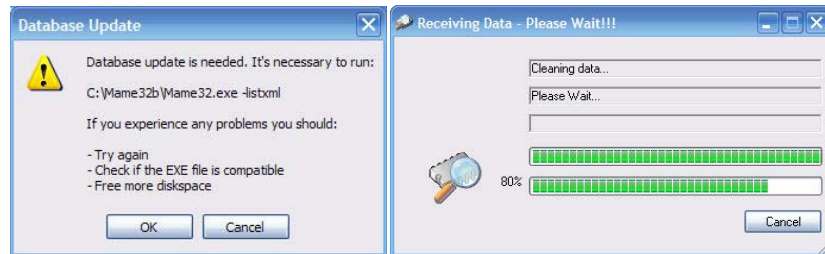
The following window will now appear:



You will now see that you have just successfully created a profile

Select the MAMEUI32 profile from the 'Profile' column. Now click on the Load/Update' button to load the database.

You will see this window:



Click OK to continue updating the database.

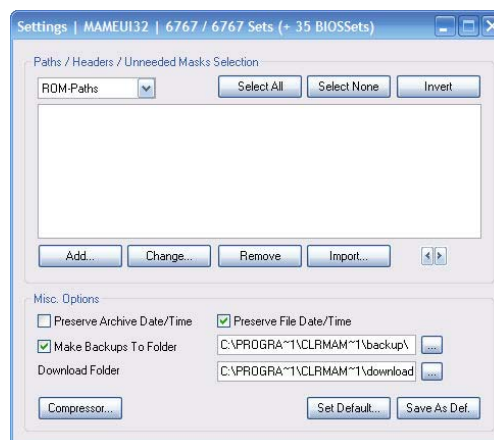
You may see the following DatFile Problem. Just click 'OK TO ALL' and continue.



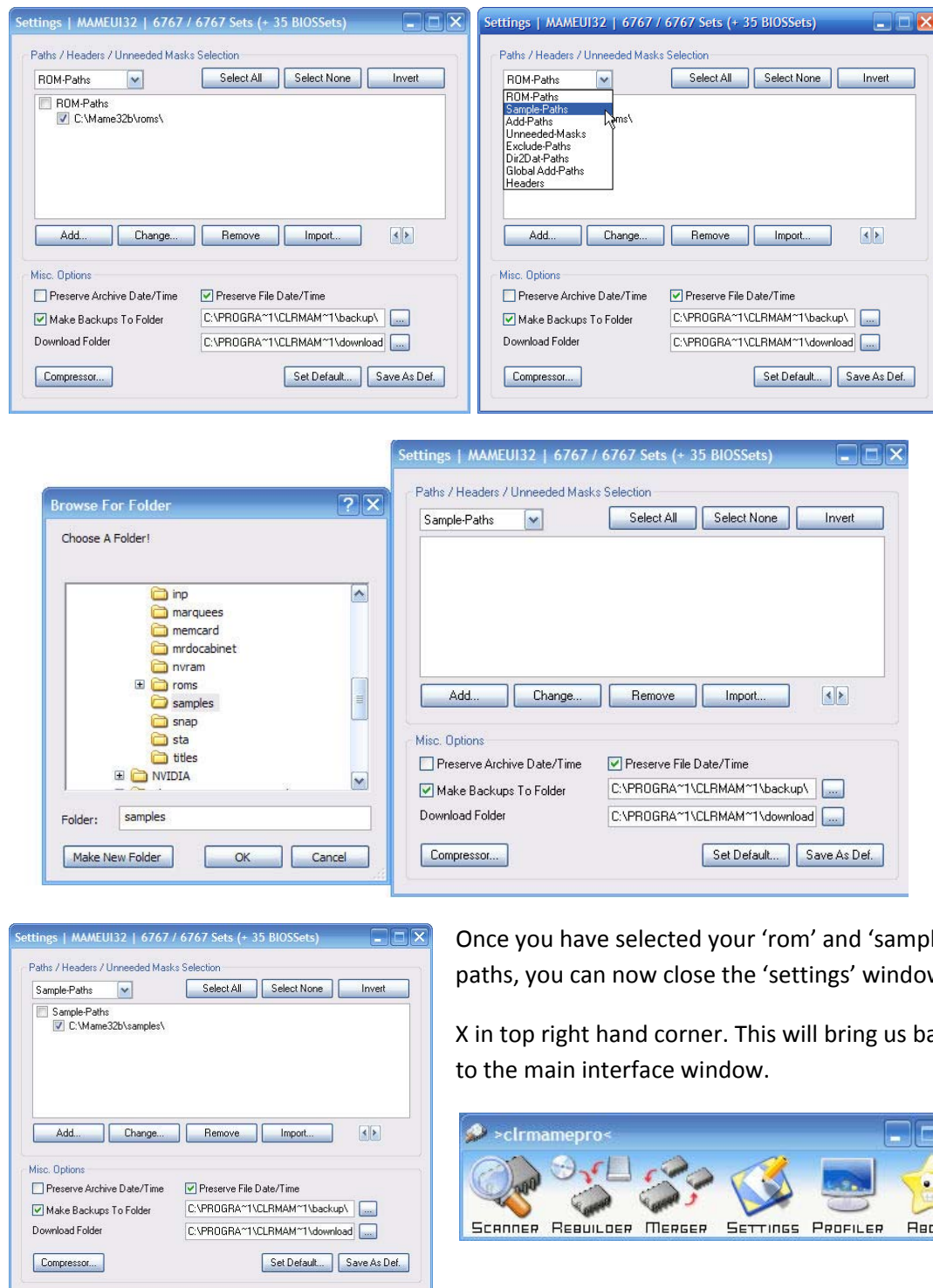
Now you should see the main interface for CLRMAMEPRO



We want to now click the 'Settings' button/Icon, which will display the Settings windows.



You will notice up the top-left, we have 'ROM-Paths'. Here is where we direct CLRMAMEPRO to our roms directory. Click the 'Add' button and browse to your ROMS folder via, (usually C:\MAME32\roms). Repeat the same process for your Samples (samples are snippets of audio from the game of its namesake).

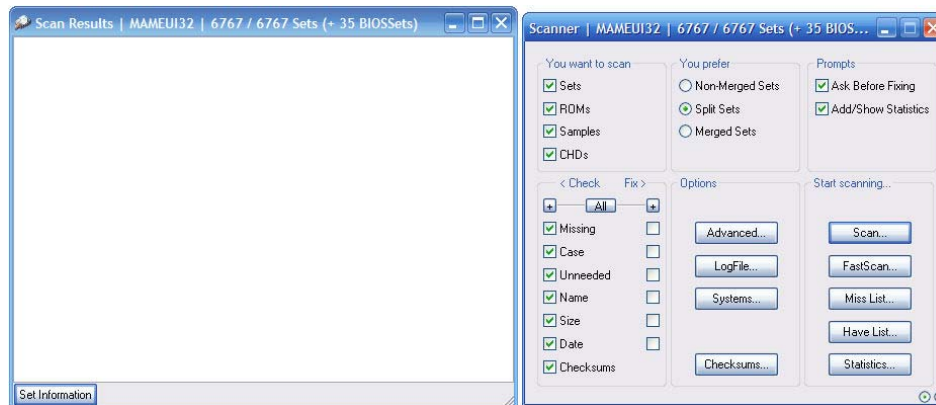


Once you have selected your 'rom' and 'sample' paths, you can now close the 'settings' windows.

X in top right hand corner. This will bring us back to the main interface window.

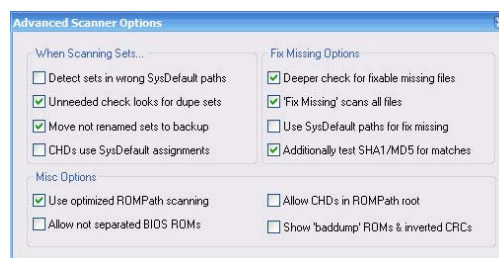


Now click on the 'Scanner' button/icon. This will display the scanner area. Here is where clrmamepro performs the important task of checking your romsets. You will see the 'Scanner win will look something like this:



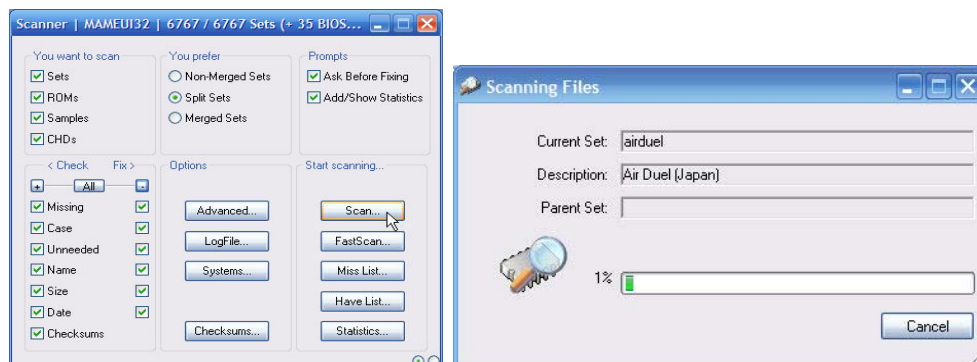
To explain the 'Scanner' windows some more, up the top left is the "You want to scan" area. Here you choose what you want to scan. (roms, romsets, Samples and CHDs). In the "You prefer" area, one can select how they would like their sets managed. I prefer Split Sets. "Check & Fix" area is where you can customize what is checked and fixed. Placing a tick in the Fixed area will tell clrmamepro to fix that. The "Start scanning" area is where you will start the scan after you have selected your settings and options from within the Scanner window.

In "Options", I click the 'Advanced' button and select the 'Fix Missing – scans all files'.

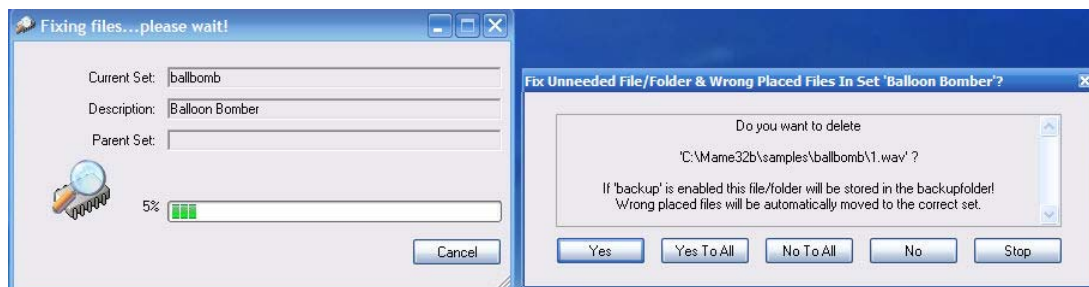


Once done press the 'Scan button'

We are actually now performing a scan

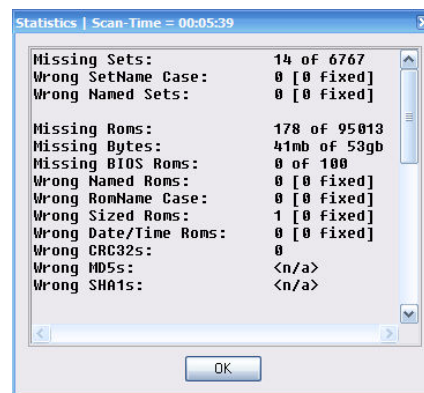


Already it has prompted me to fix an issue:



I always select 'Yes To All' and continue. Scans can take between 3-25 minutes depending upon the state of your data.

After the scan has completed, you will get a report of the scans finding:



```
Missing Sets:      14 of 6767
Wrong SetName Case: 0 [0 fixed]
Wrong Named Sets:  0 [0 fixed]
Missing Roms:      178 of 95013
Missing Bytes:     41mb of 53gb
Missing BIOS Roms: 0 of 100
Wrong Named Roms:  0 [0 fixed]
Wrong RomName Case: 0 [0 fixed]
Wrong Sized Roms:  1 [0 fixed]
Wrong Date/Time Roms: 0 [0 fixed]
Wrong CRC32s:      0
Wrong MD5s:        <n/a>
Wrong SHA1s:       <n/a>
Missing Samples:   86 of 2089
Wrong SampleName Case: 0 [0 fixed]
Missing CHDs:      153 of 213
Wrong CHD Case:    0 [0 fixed]
Wrong Named CHDs:  0 [0 fixed]
Wrong CHD_MD5/SHA1s: 0
Unneeded Files/Folders: 0 [166 fixed]
Corrupt Containers: 0
Number Of Sets:    6767
Number Of BIOS sets: 35
Number Of Parents: 1492
Number Of Clones:  3113
Number Of Others:  2162
Number Of Roms:    95013
Number Of BIOS Roms: 100
Number Of Samples: 2089
Number Of 'nodump' ROMs: 1026
Number Of 'baddump' ROMs: 445
```

As you can see from the results, I'm missing some:

Sets – 14

ROMS – 178

And so on.

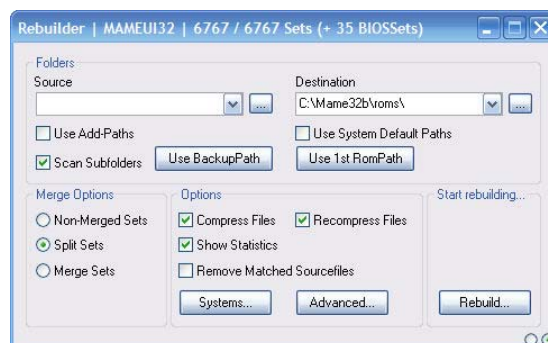
Clicking on OK will reveal what is exactly missing.



Now you see what you need to correct your roms, romsets, samples and CHDs.

Once you find what is missing, how do you add/intergrate them into your existing data?

Go back to clrmamepro main interface window and select 'Rebuilder'.



Select your destination directory and select your source. Your source is the folder you have downloaded all your missing roms, romsets etc to. Press 'Rebuild' and it will rebuild all your data.

You can now run the scanner again to see how it went.

That's it.

I will include later, how one can scan their Marquees, Snaps, Cabinets and Titles etc in a later version of this document.